

Distinta Part.

Spall. n.	3+4+9+1+1-2-13-7+8+12+10	L. (cm)	q.14
1	120	1,6	
2	142	2,8	
3	173	3,8	
4	213	5,2	
5	243	7	
6	346	3,6	
7	419	2,4	
8	424	1,0	
9	496	1,62	
10	556	1,12	
11	646	4,6	
Totale		3130,36	
	L. (m)	3181,47	

Peso complessivo del Ferro [Kg] = 3781,47
 Superficie di accostamento [mq] = 21,81



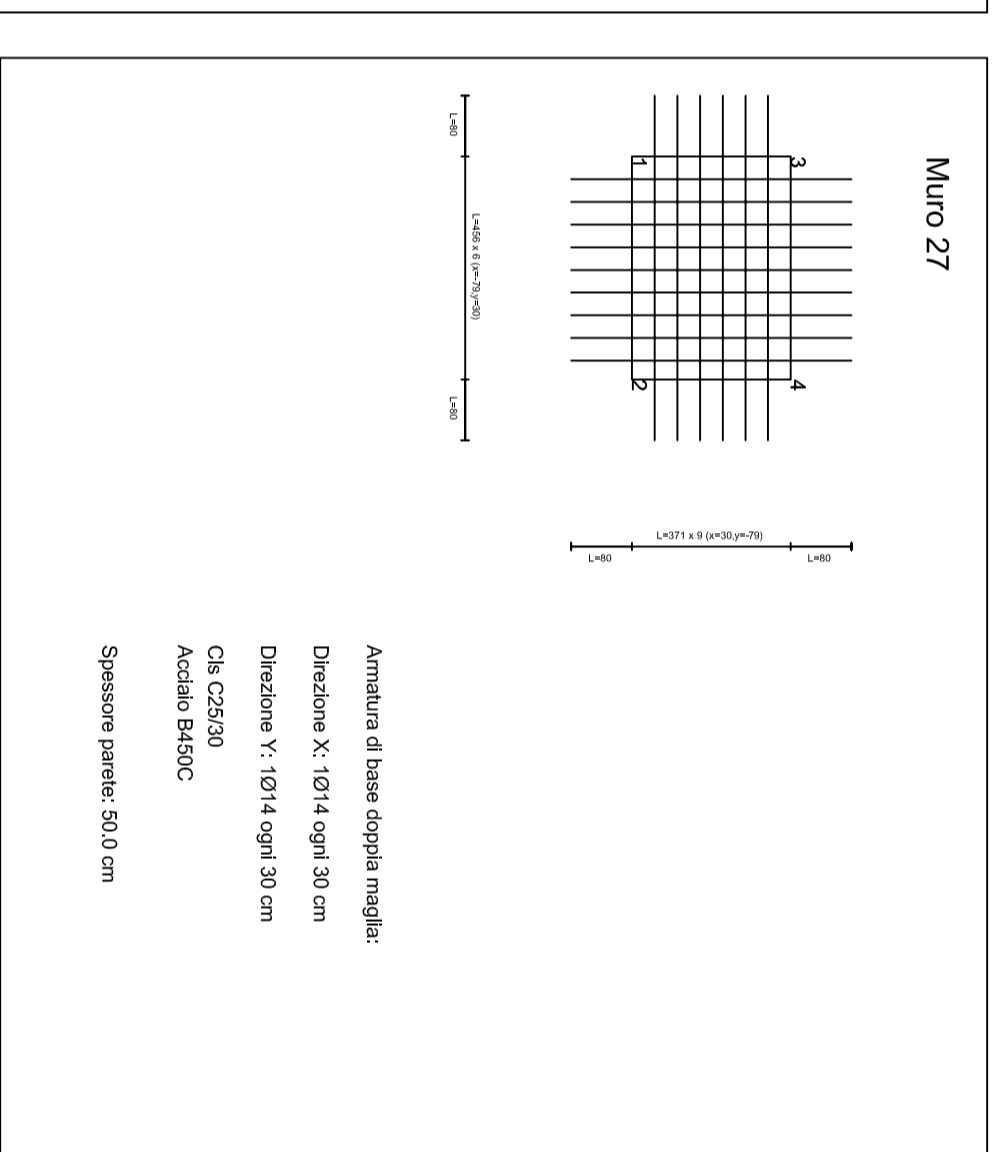
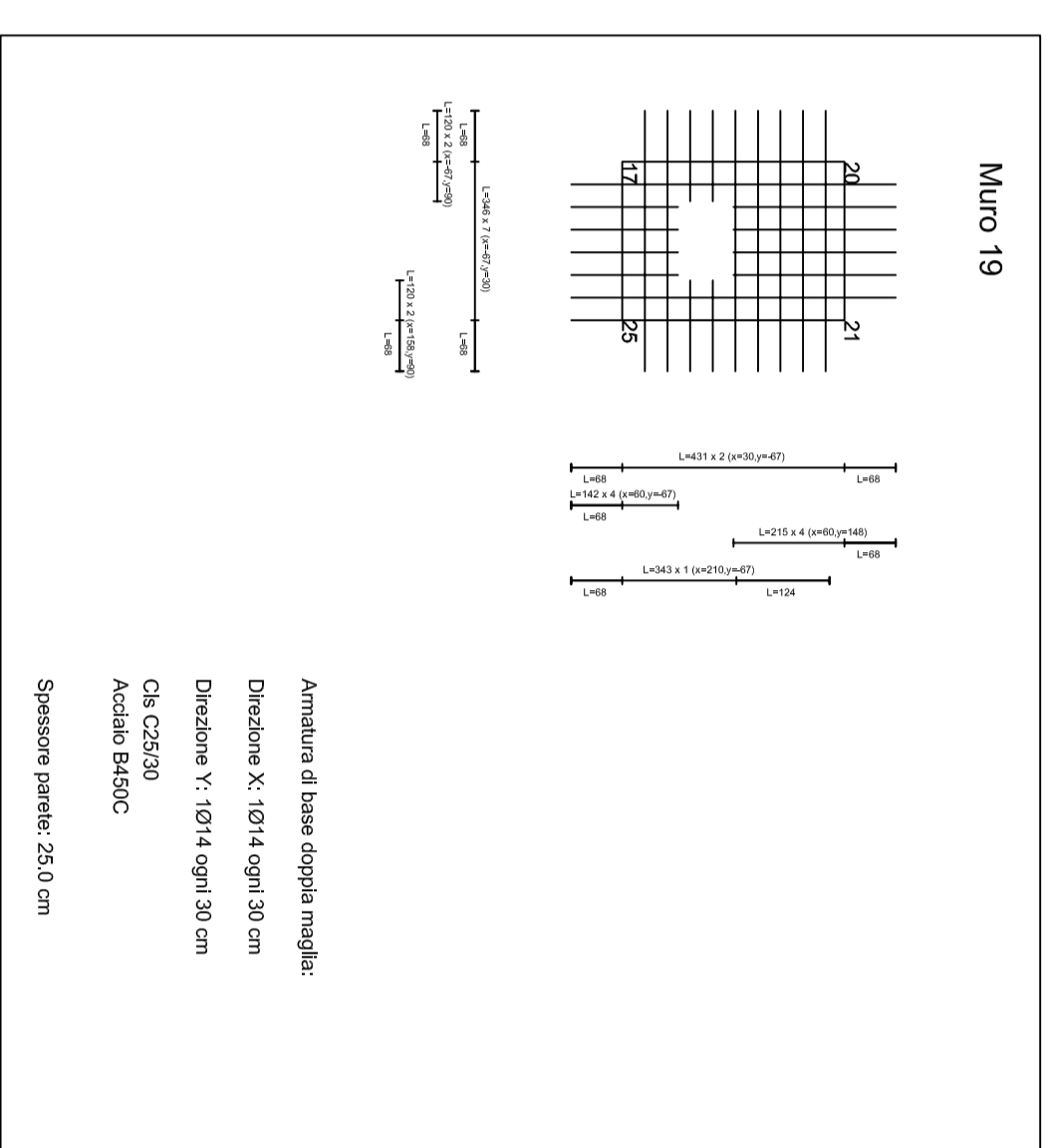
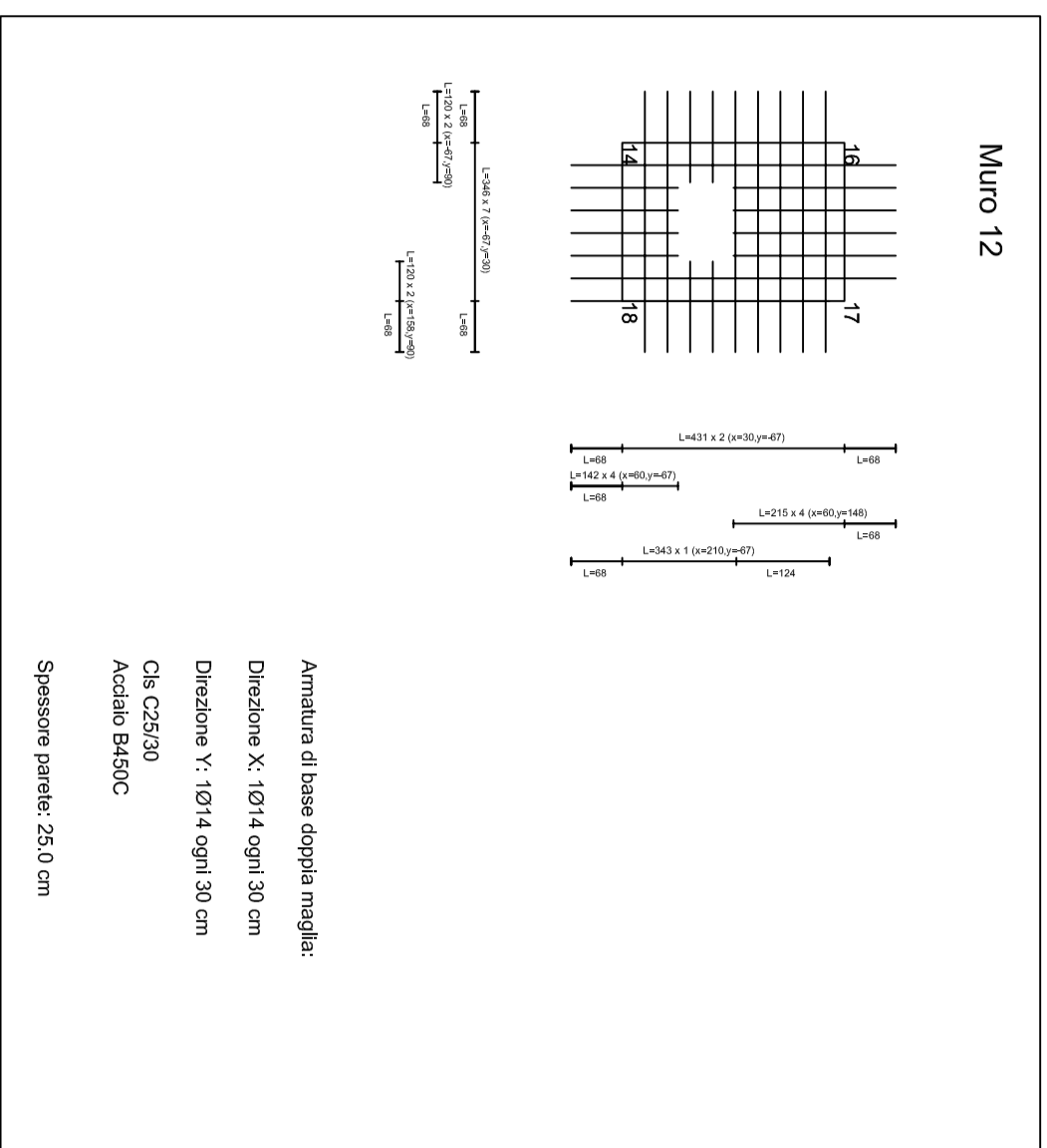
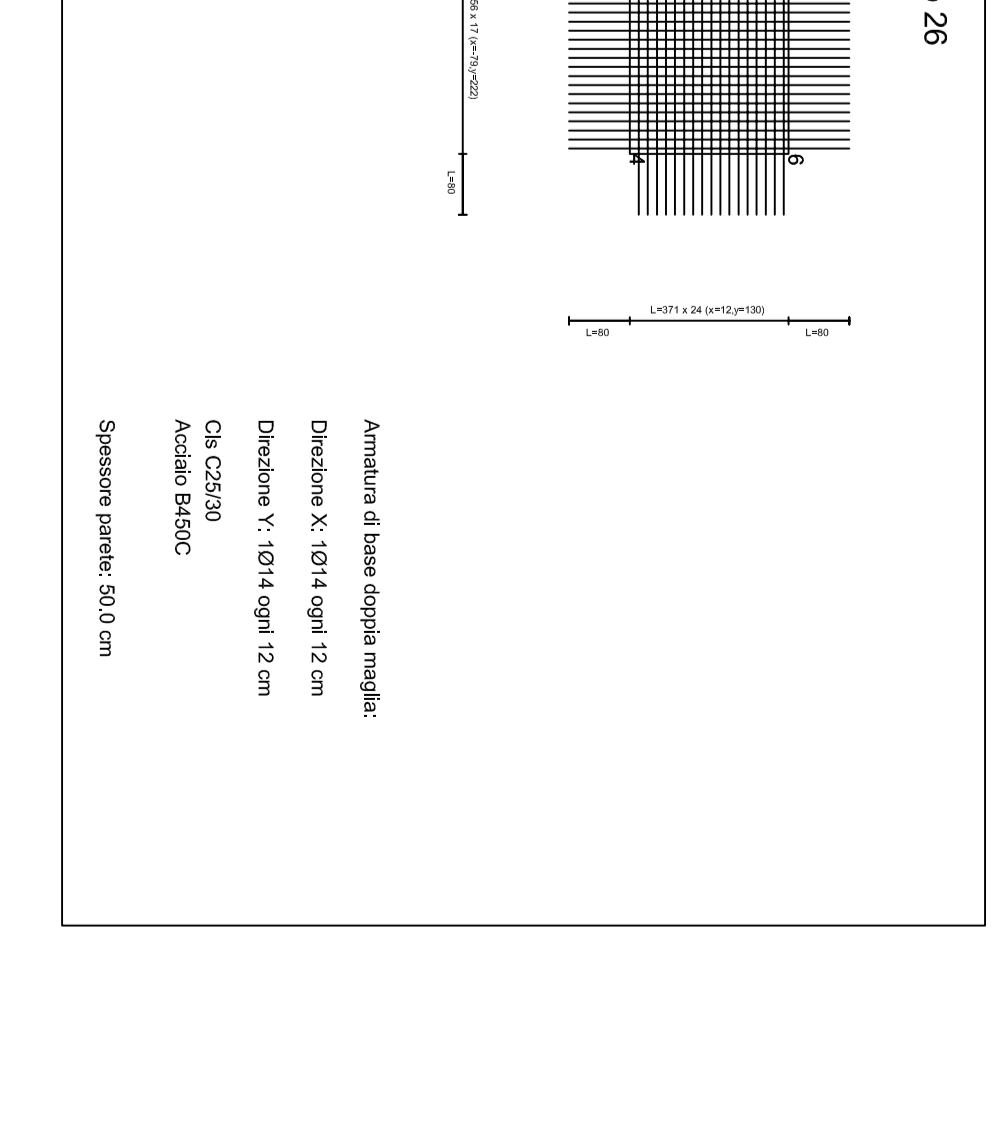
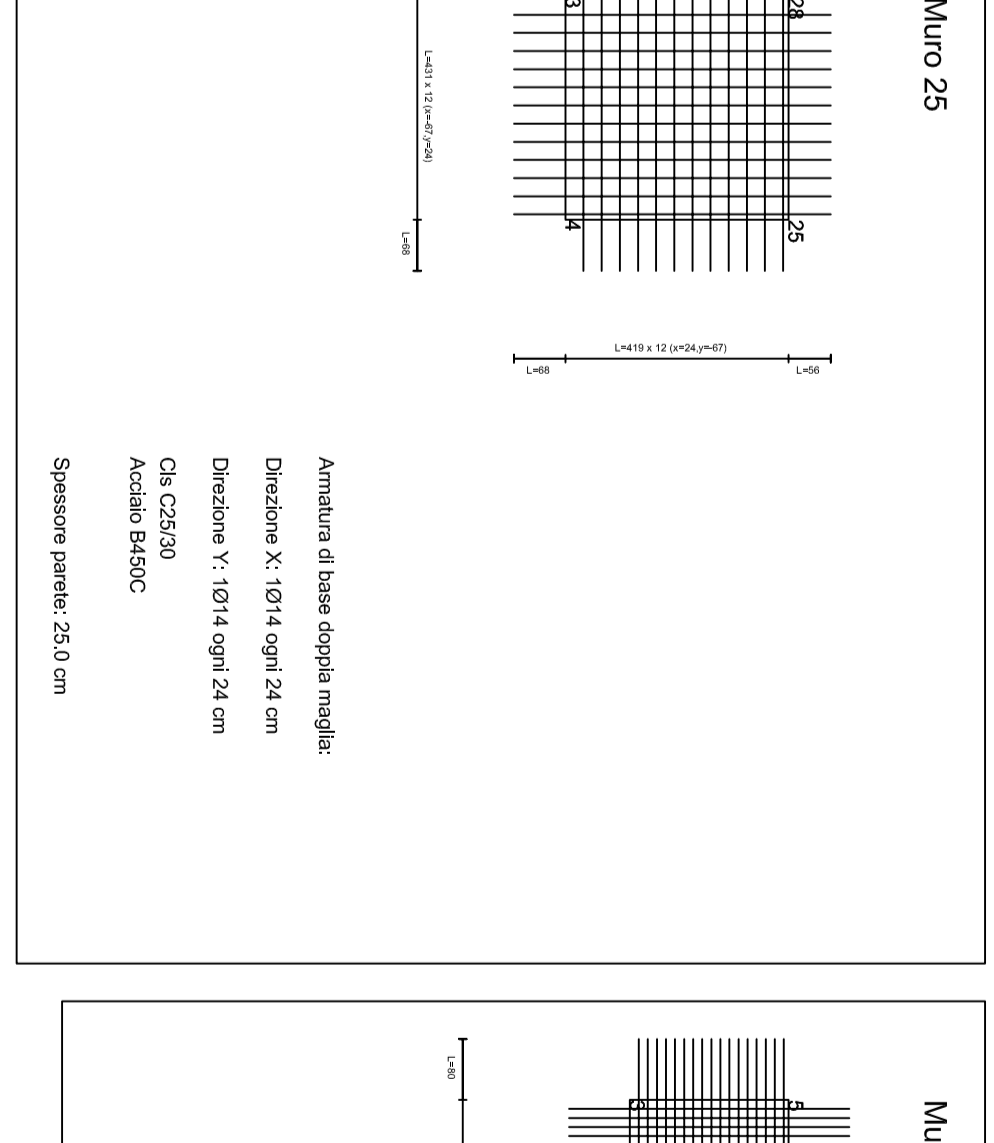
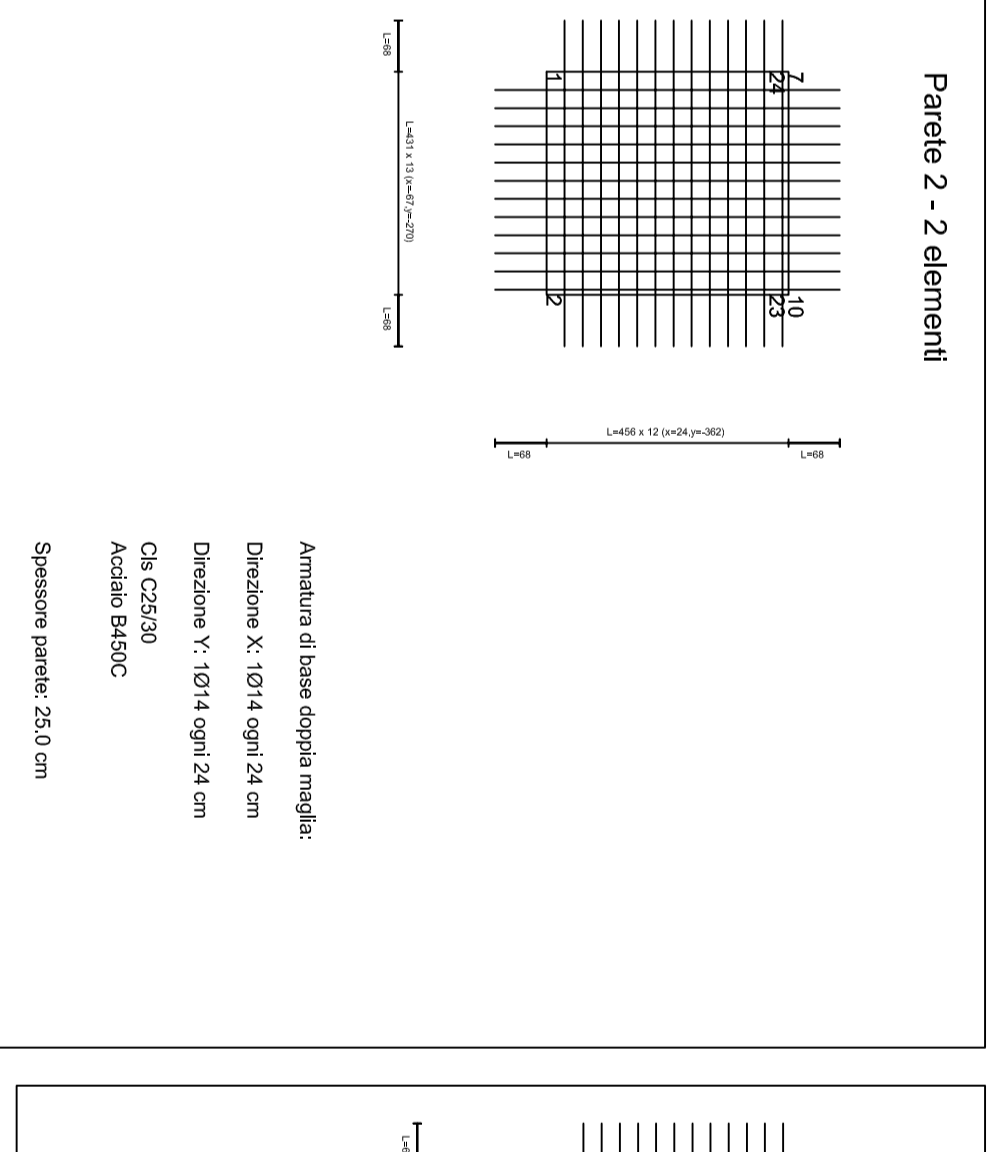
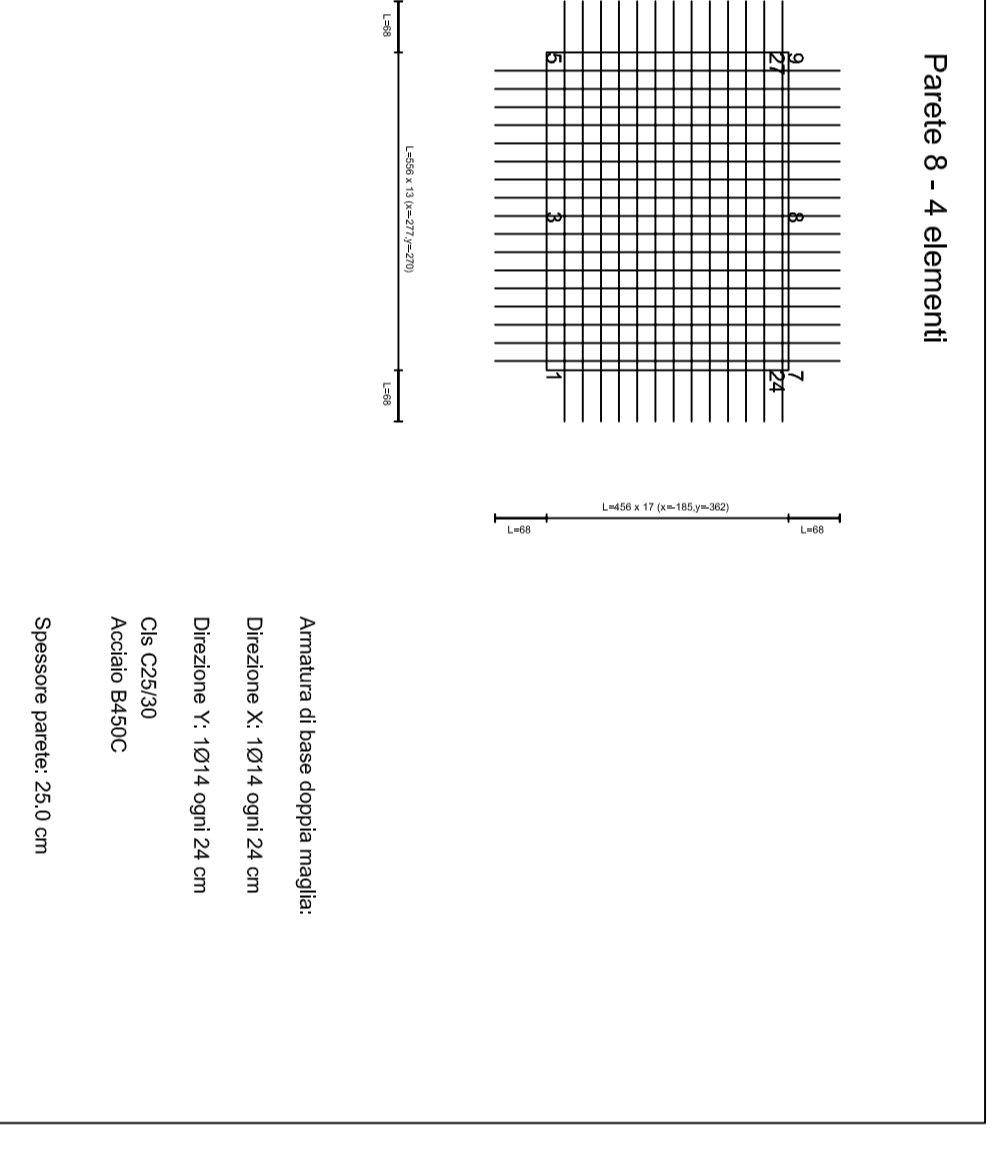
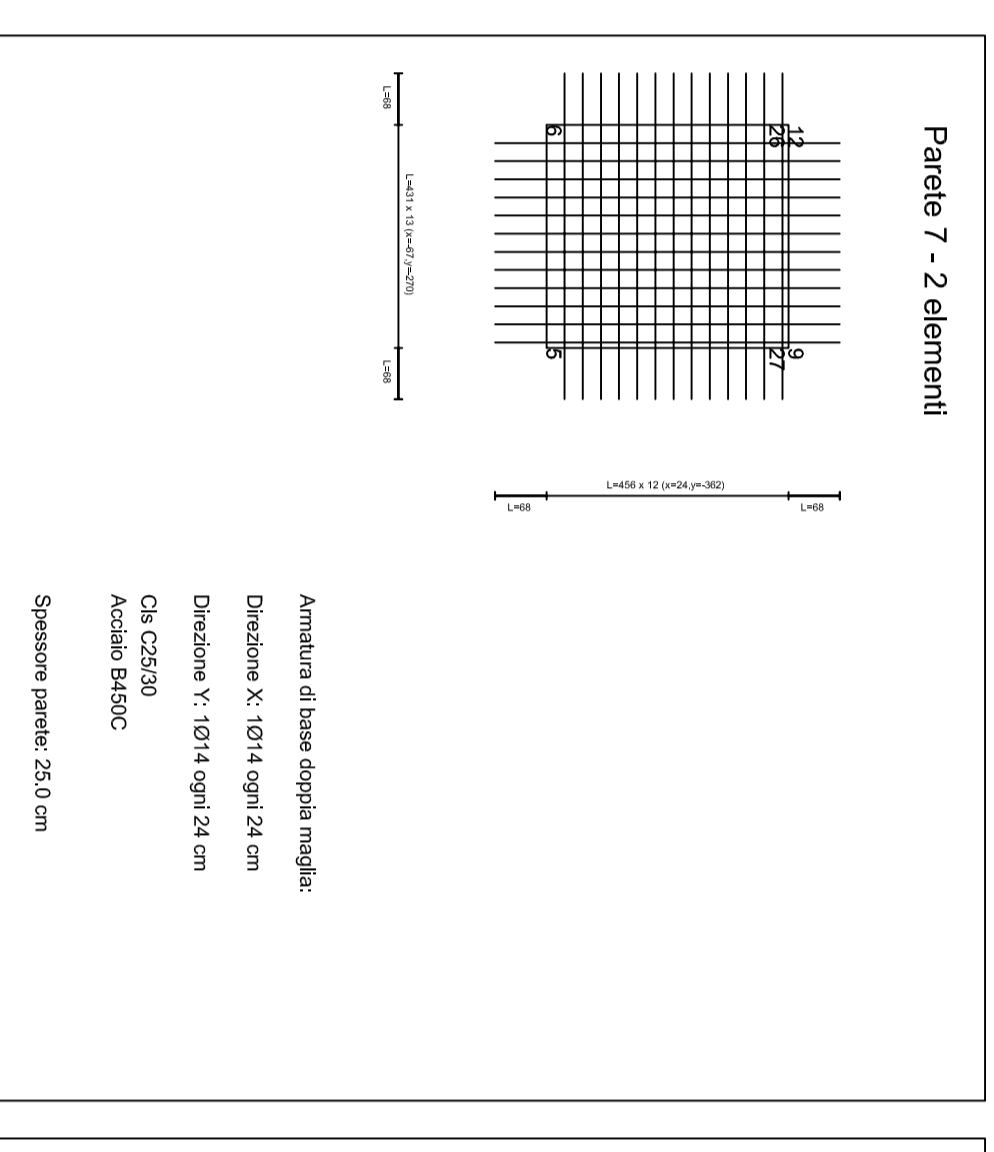
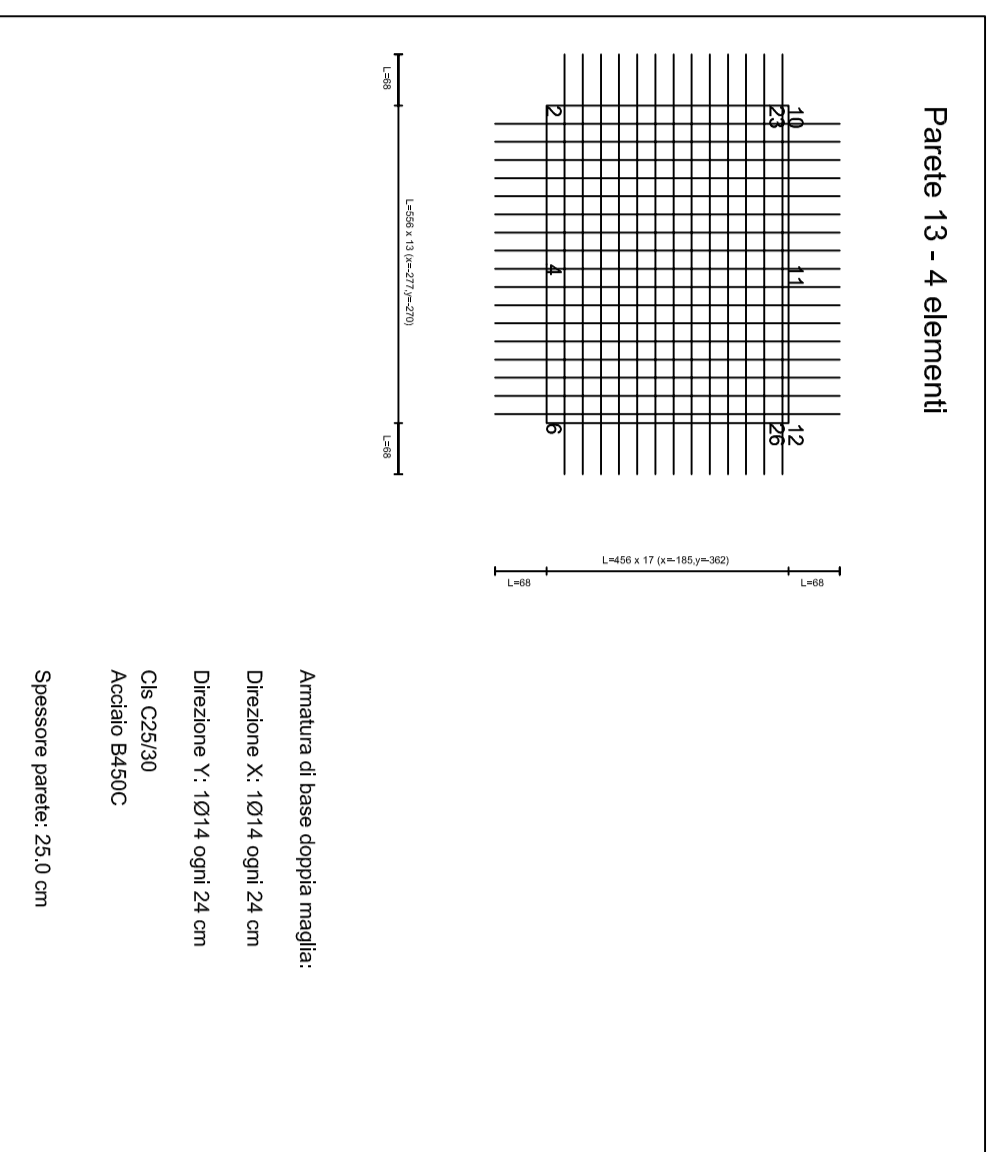
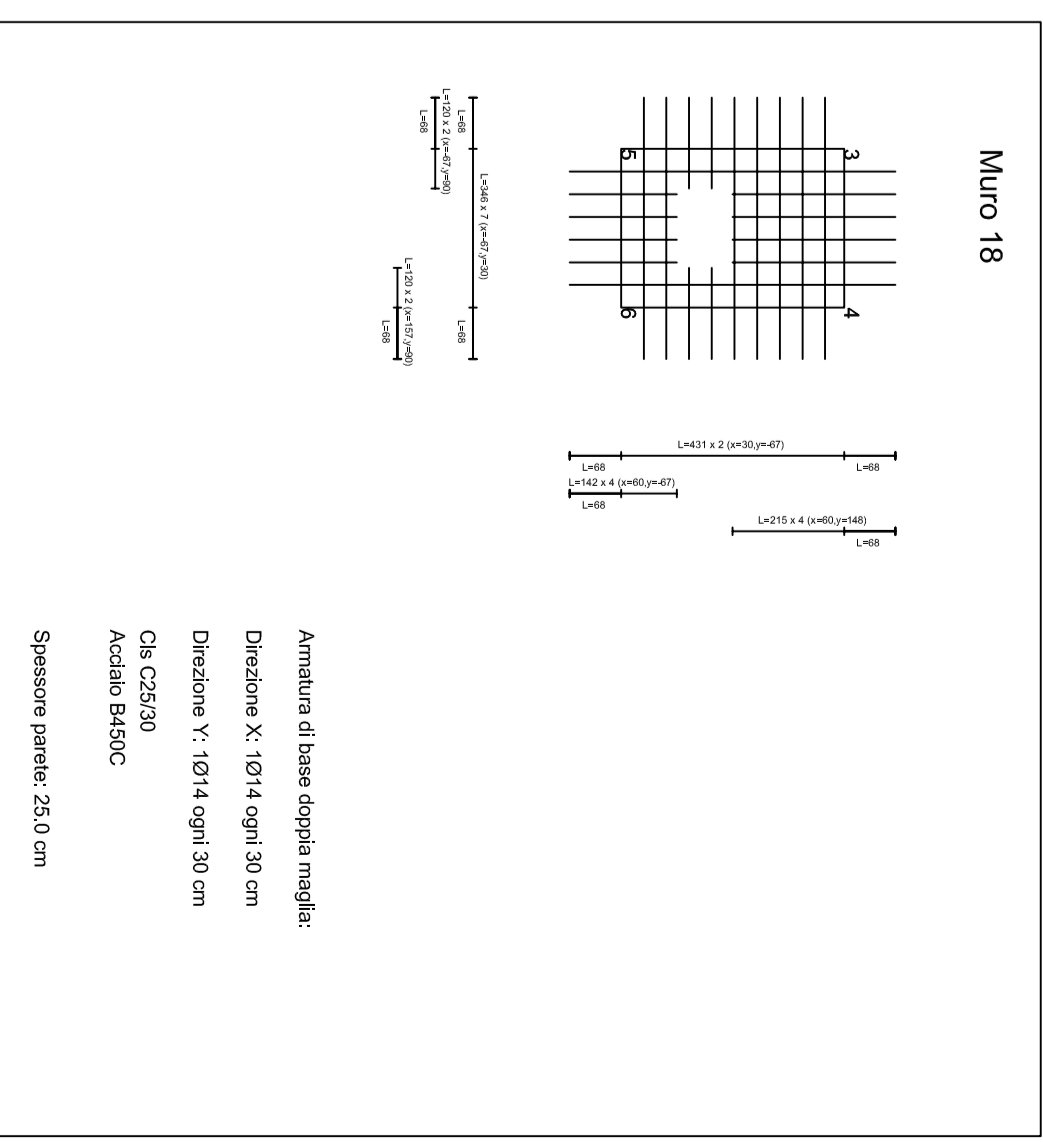
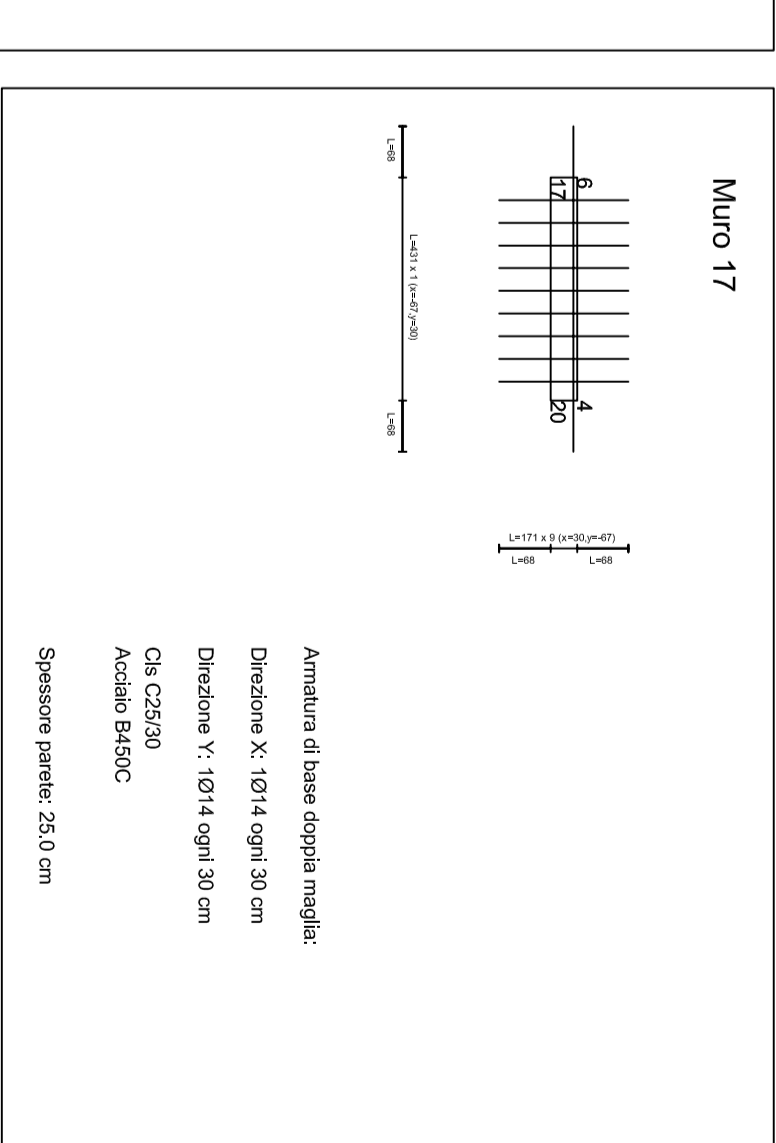
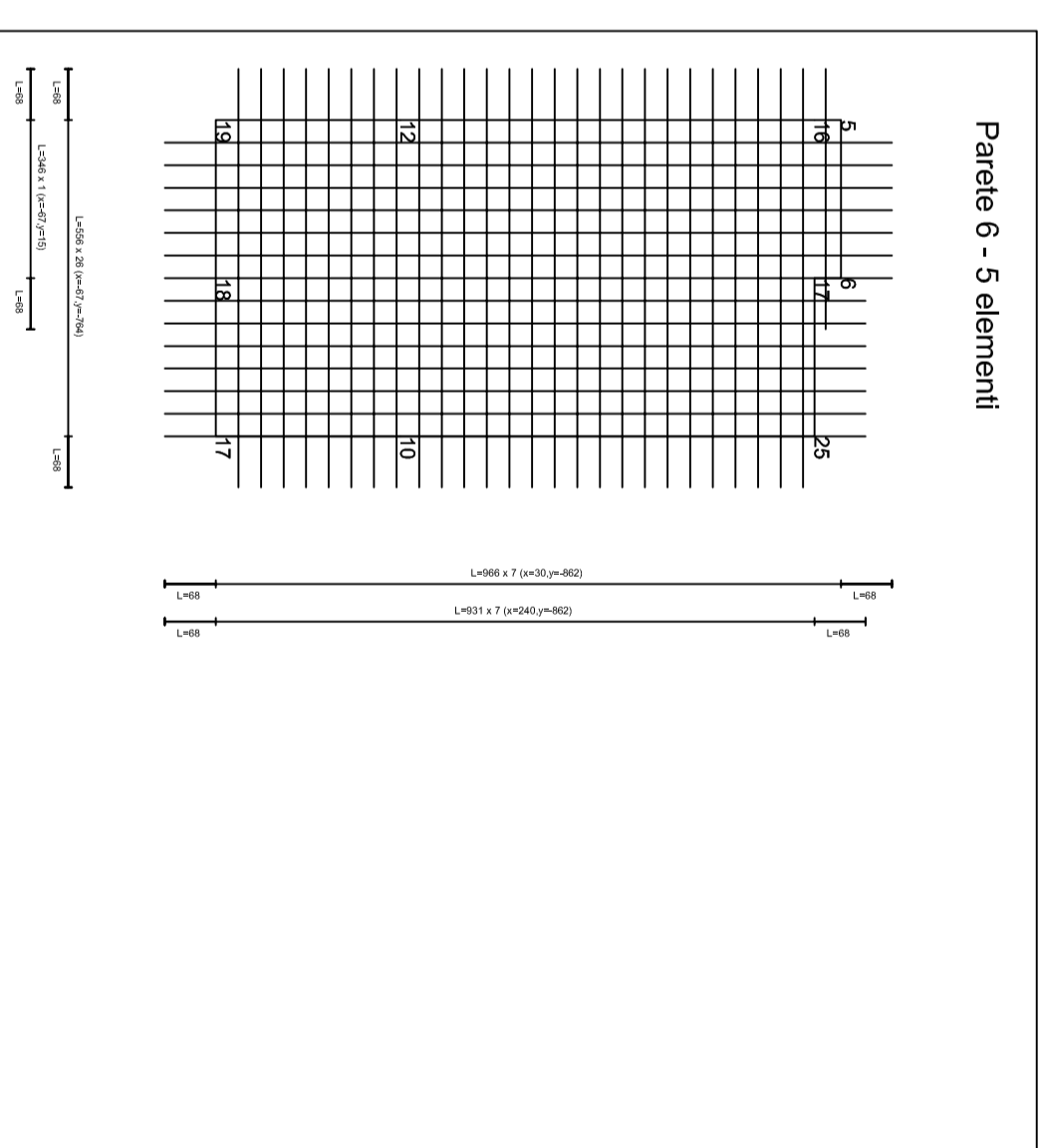
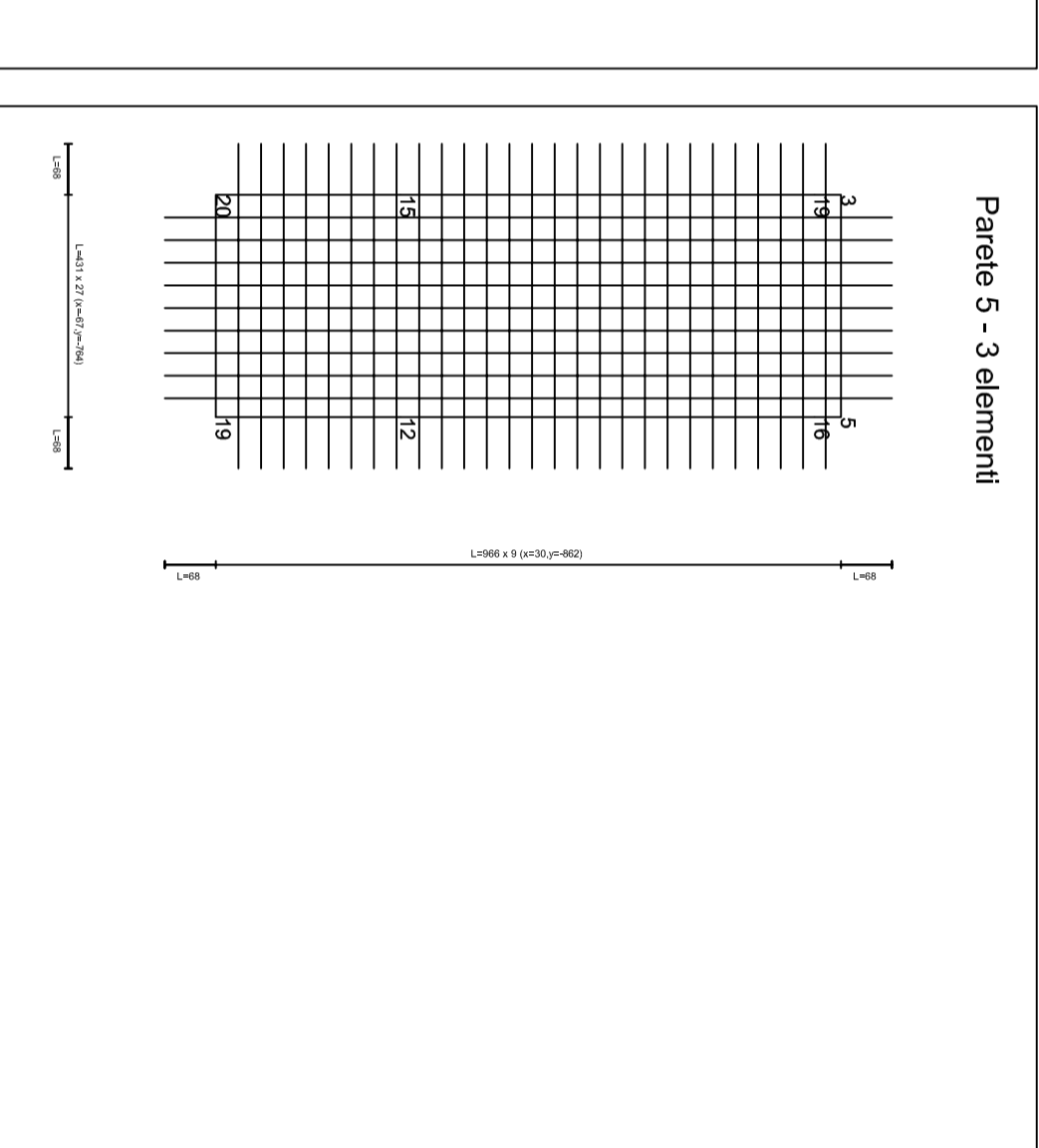
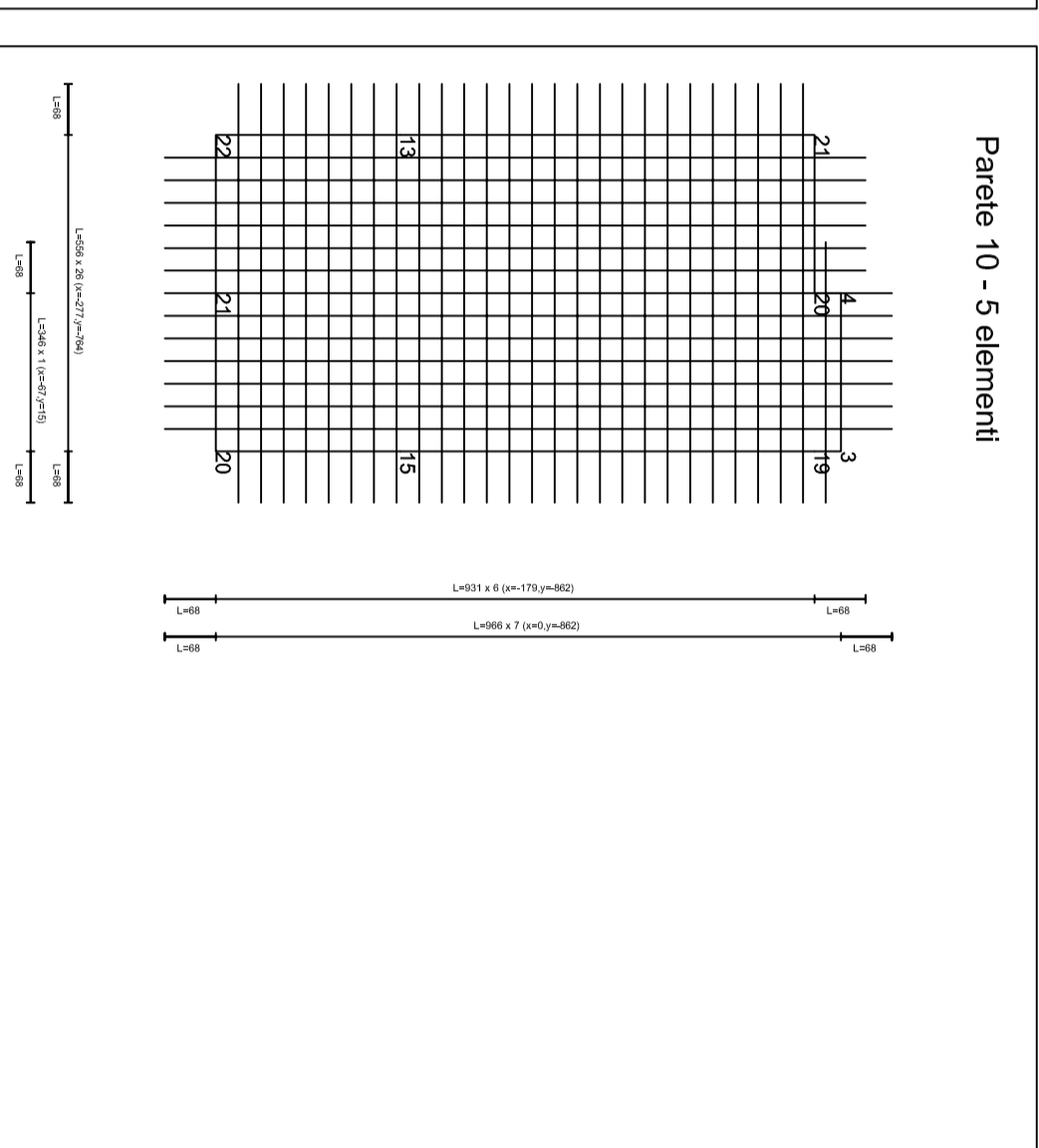
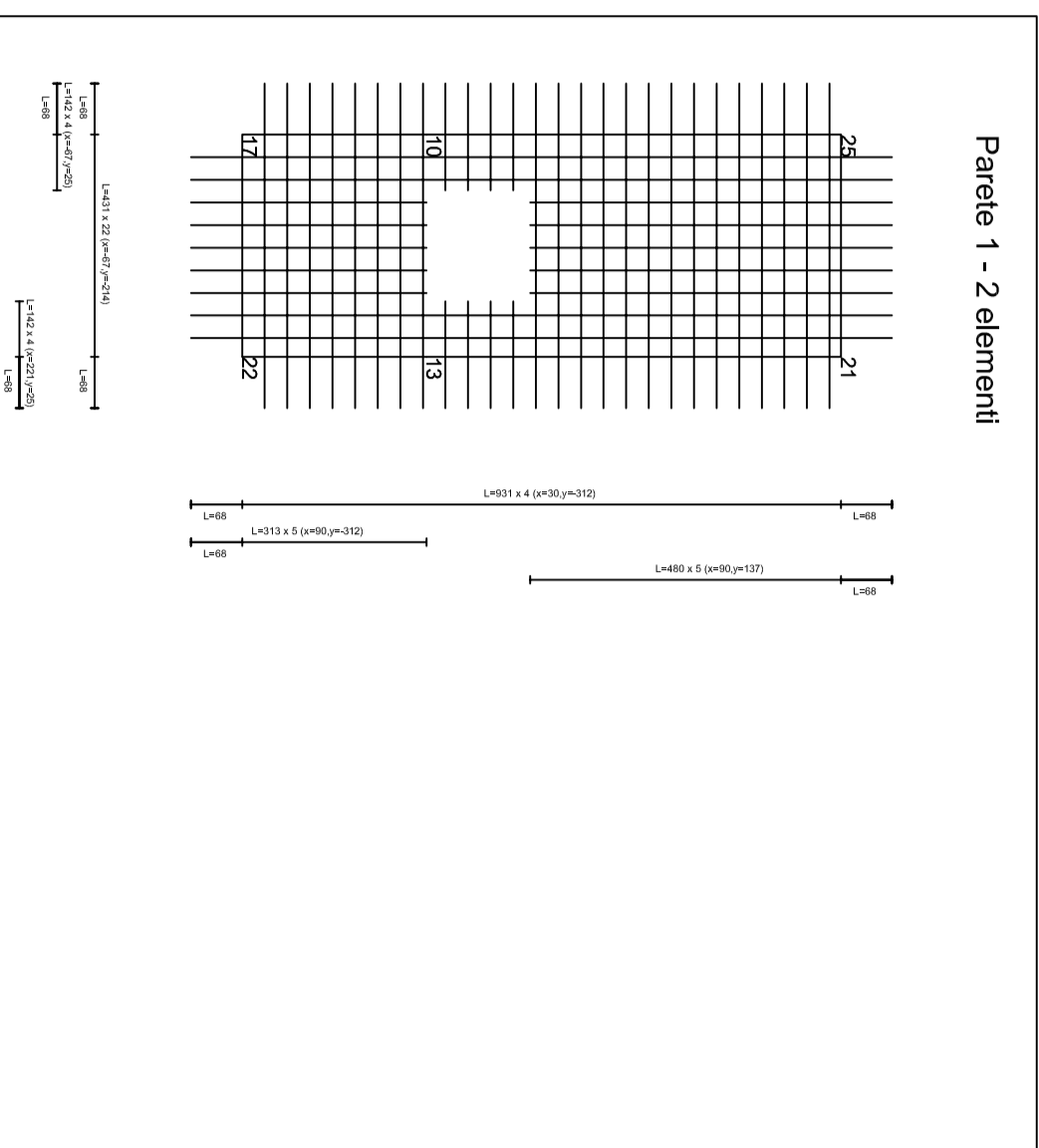
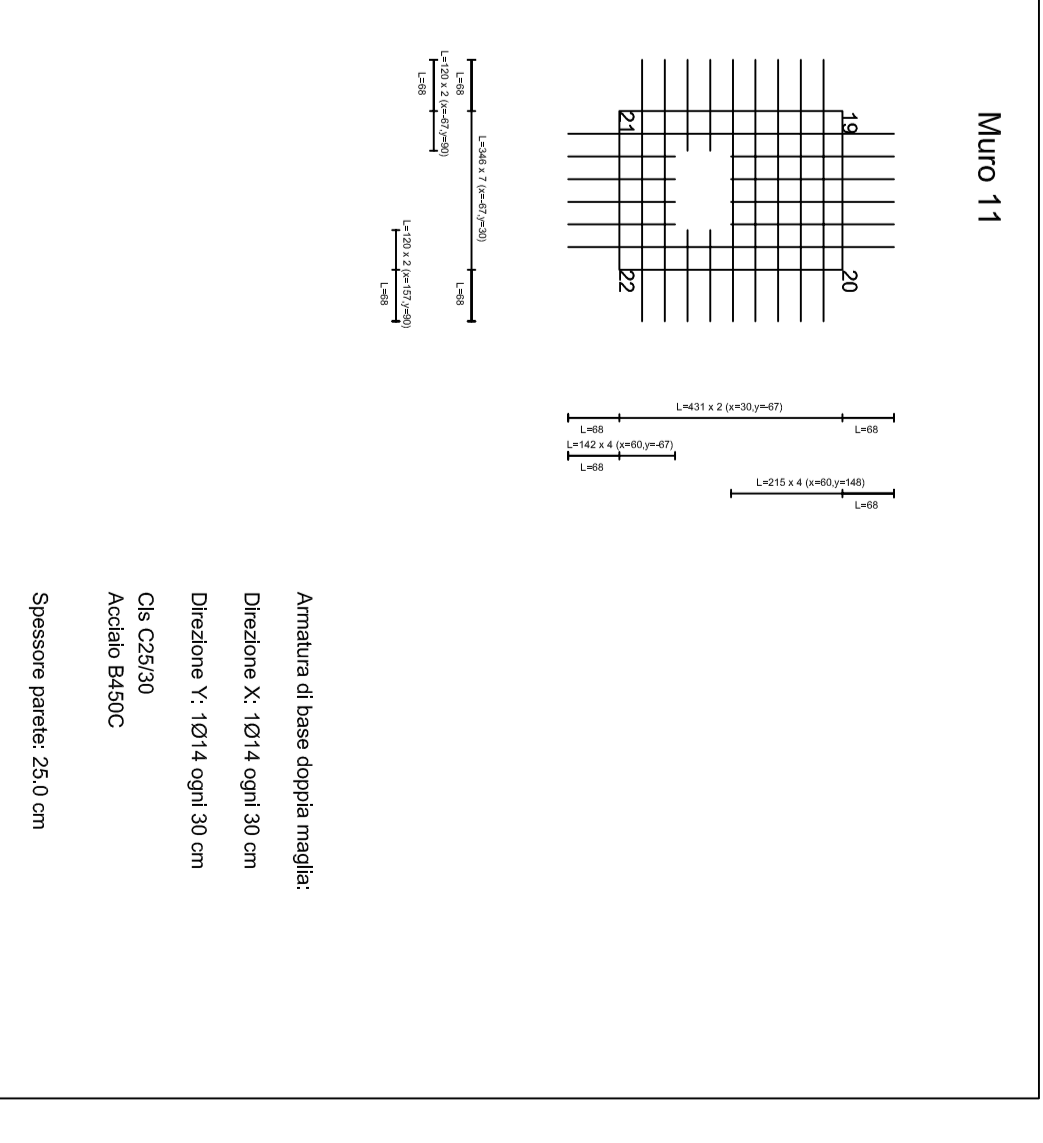
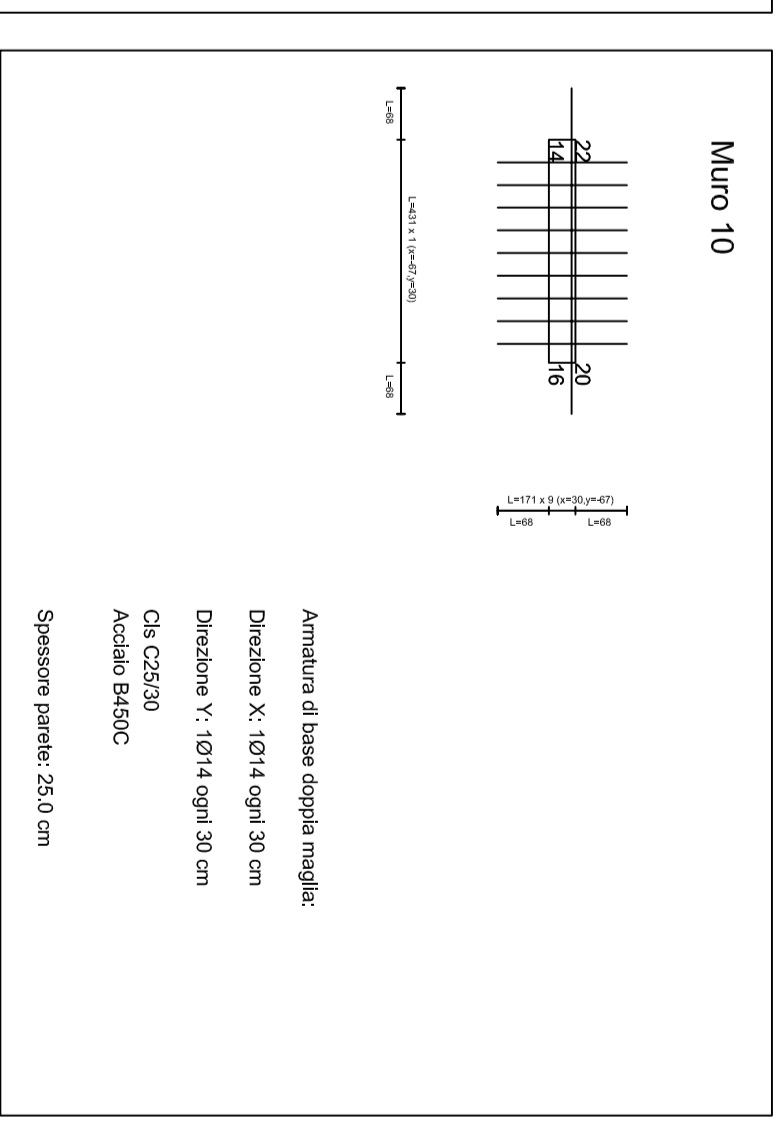
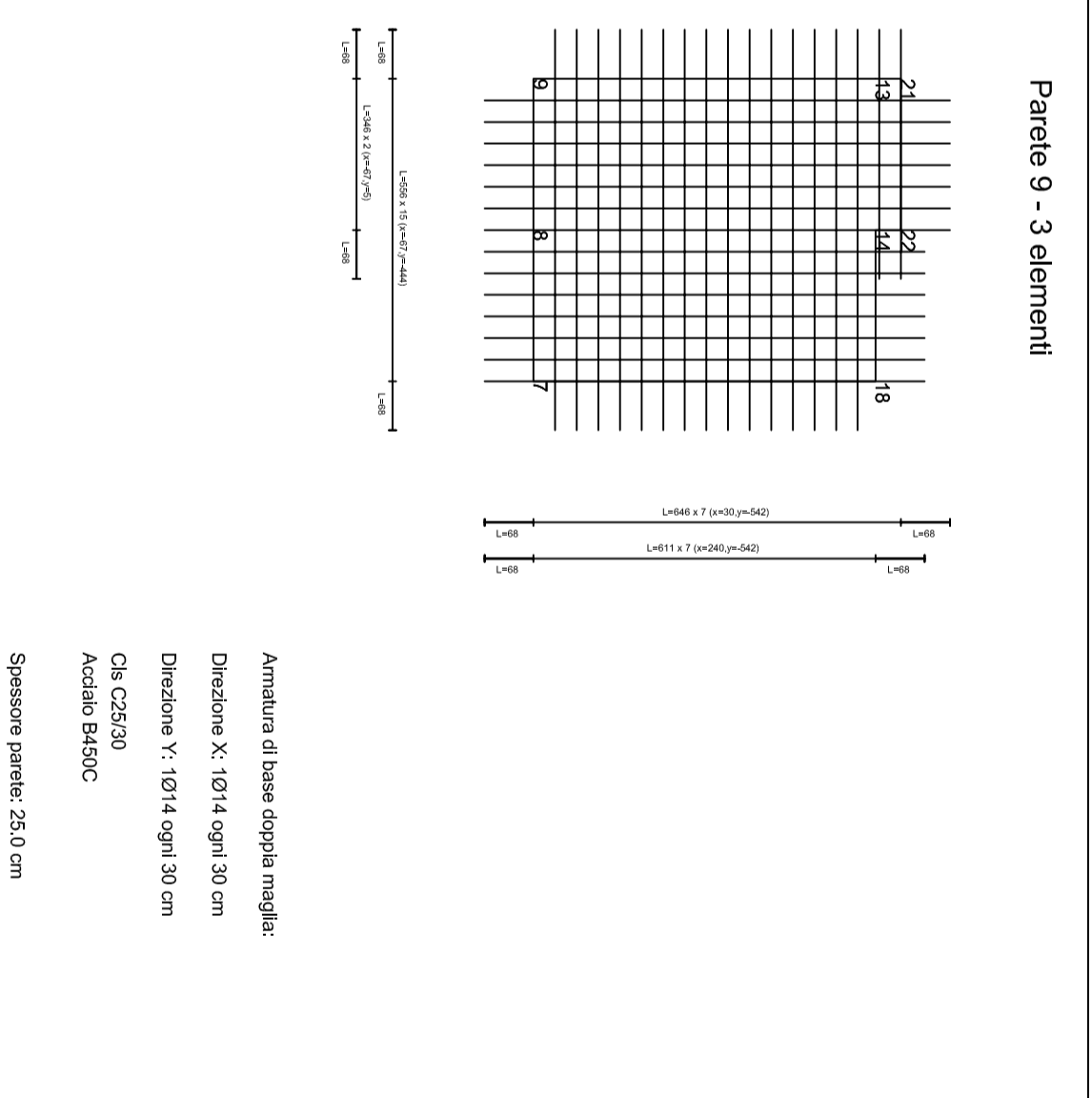
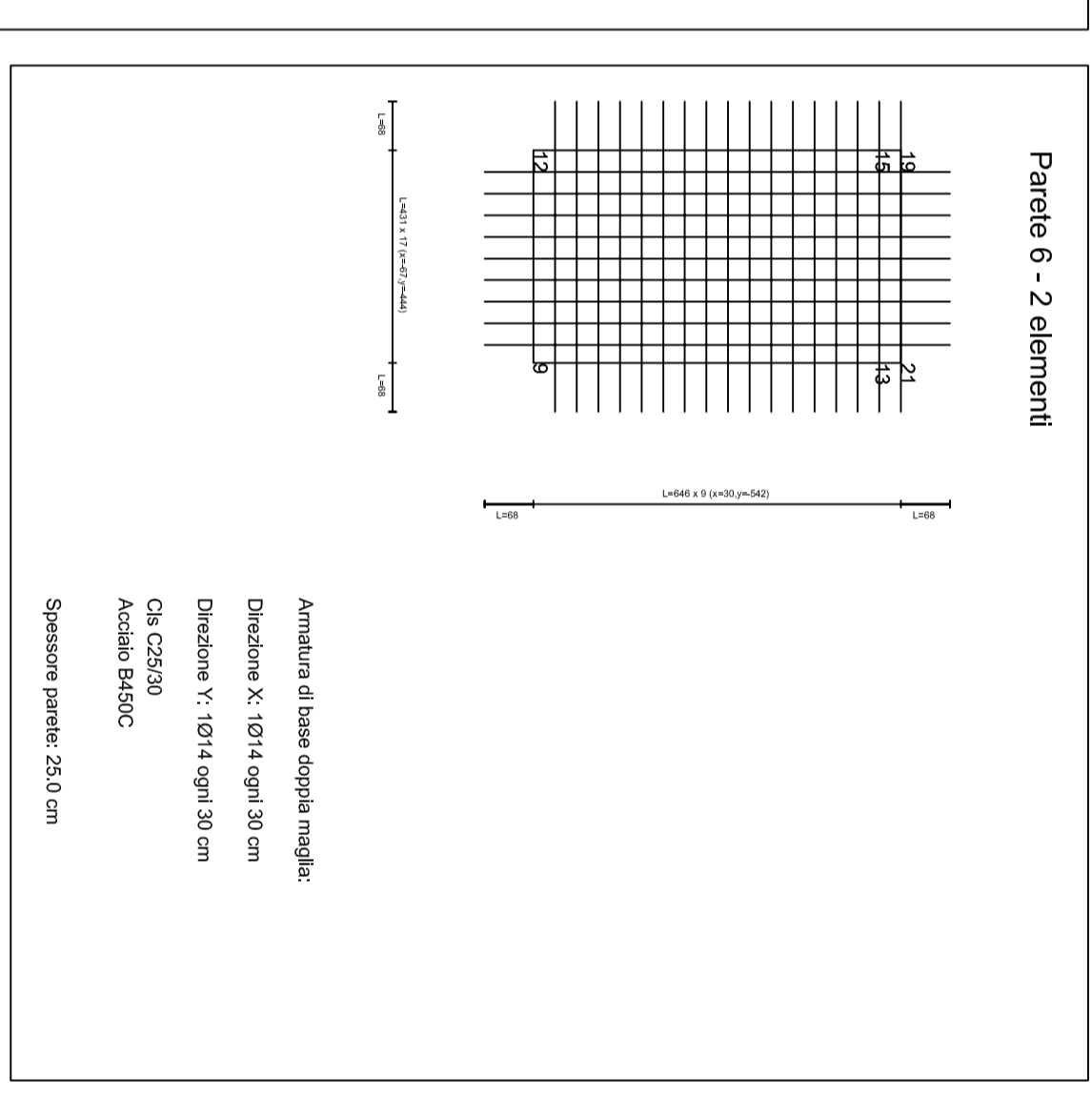
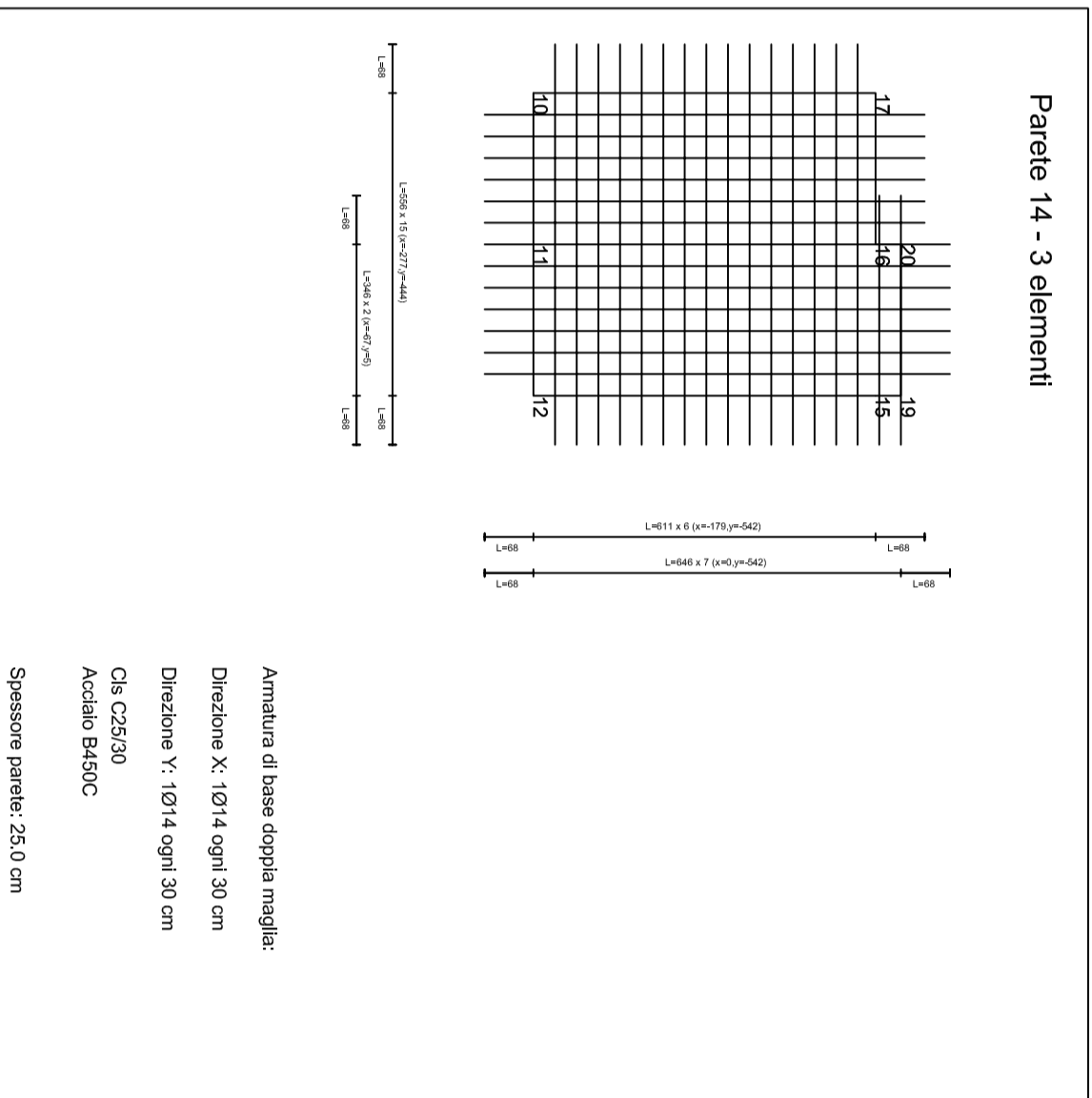
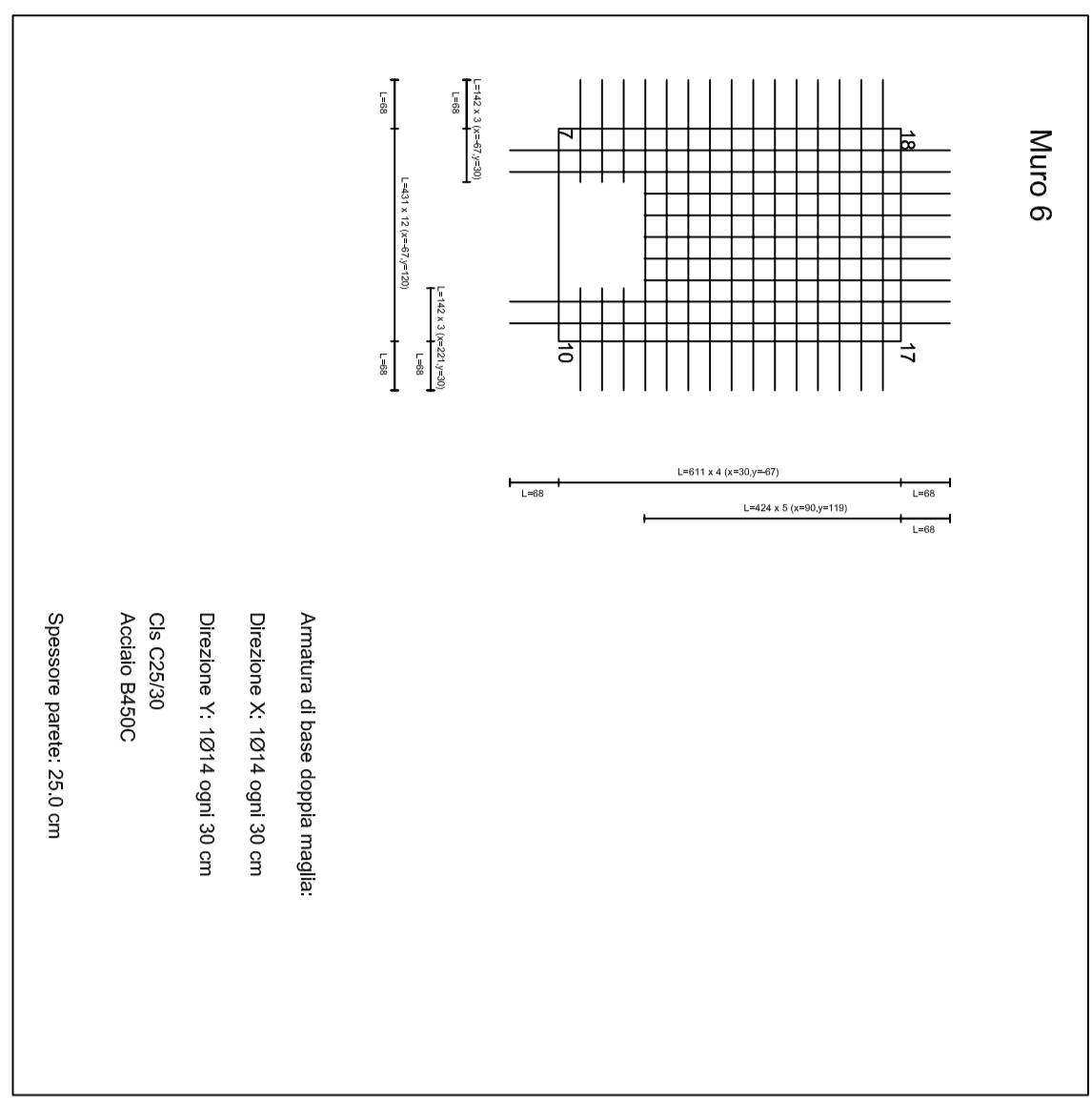
PROGETTO ESECUTIVO

ESADONTO	Calcolo strutturale: Carpenteria	SCALA
H2	Vasca di raccolta	1:100

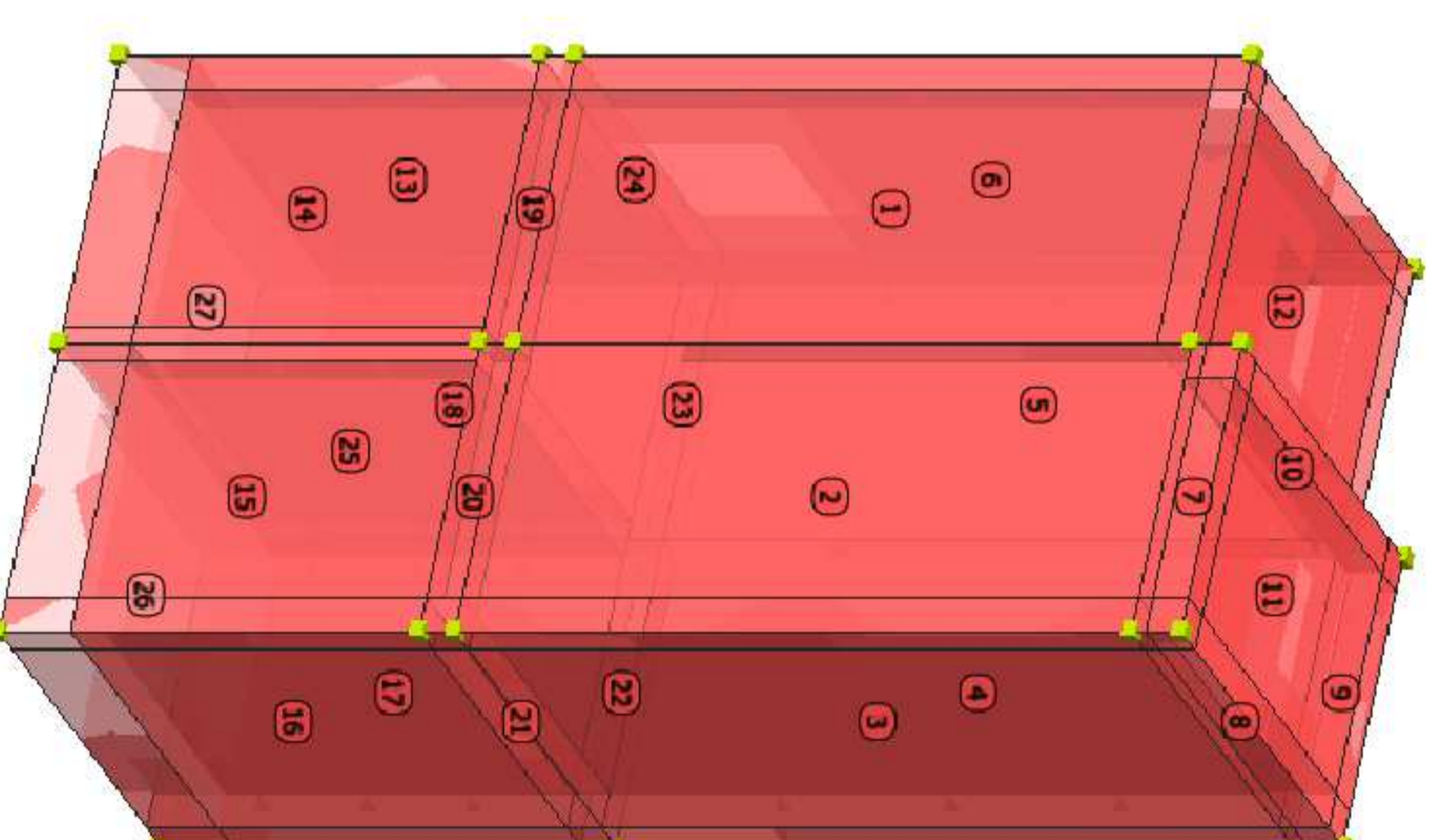
Arch. Elisabetta PESCIUA

Il Consulente
 Ing. Andrea DORIA

**CONSORZIO DI BONIFICA
 VULTURE ALTO BRADANO**
 Gaudiano di Lavello (PZ)
 MANUTENZIONE STRAORDINARIA DI UN IMPIANTO DI
 IRRIGAZIONE PER COLTURE ARBOREE IN CONTRADA
 MESSERO E ATTREZZAMENTI IRRIGUIO
 in agro di Venosa



Visita anteriore



Visita posteriore

